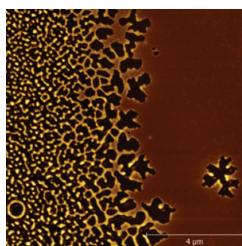
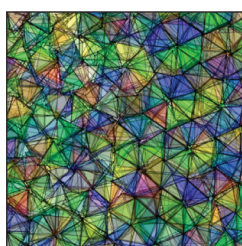
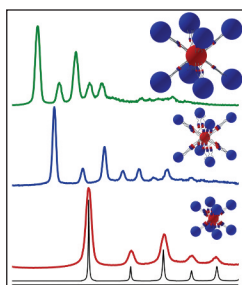
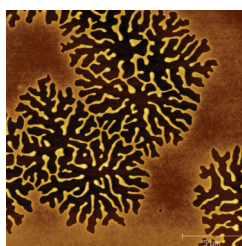
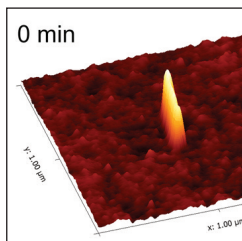


complex fluids



70th New England Complex Fluids Workshop

Friday, March 24, 2017

Mason Laboratory
9 Hillhouse Avenue
Yale University
New Haven, Connecticut

8:45 am – 5 pm

Agenda

8:45–9:25am *Breakfast and Registration, Welcome Lobby*

Morning Presentations

9:30–10:05am Andrej Kosmrlj, Princeton University
Statistical Mechanics of Microscopically Thin Thermalized Structures

10:05–10:40am Maria Santore, UMass–Amherst
Near Surface Particle and Bacteria Motion Signatures in Flow

10:40–11:00am *Coffee I, Welcome Lobby*

11:00–12:00pm **Sound Bites Session I: Auditorium**

12:00–1:15pm *Lunch: Welcome Lobby & Mason Lab 107*

Afternoon Presentations

1:15–1:50pm Nicolas Giovanbatista, CUNY
Understanding the Complex Behavior of Liquid and Glassy Water Using the Potential Energy Landscape Approach

1:50–2:25pm Robert MacFarlane, MIT
Polymer- and DNA-Directed Assembly of Nanocomposites

2:30–3:30pm **Sound Bites Session II: Auditorium**

3:30–4:00pm *Coffee II: Welcome Lobby*

4:00–4:35pm Zahra Fakhraai, UPenn
Measuring Long-range Correlated Dynamics in Organic Glasses

Website www.complexfluids.org

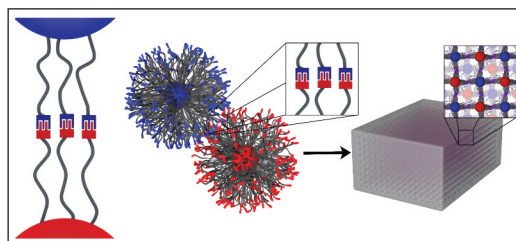
Registration deadline **March 22, 2017**

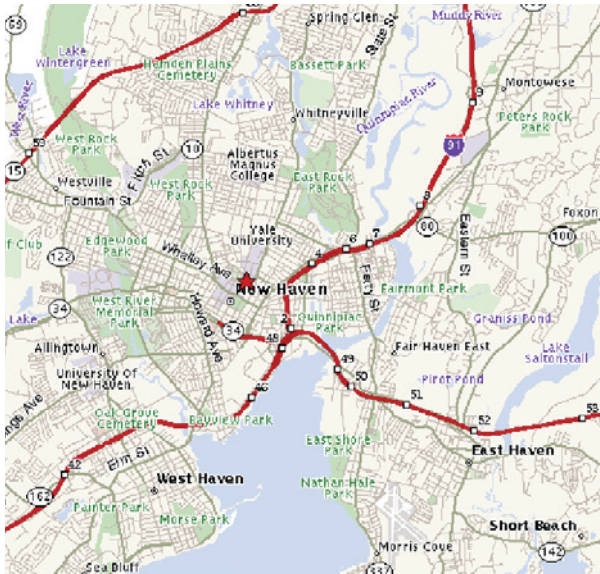
Sponsors

Center for Research on Interface Structures
and Phenomena (NSF MRSEC)
Dept. of Chemical & Environmental Engineering
Dept. of Mechanical Engineering & Materials Science
School of Engineering & Applied Science
Raymond and Beverly Sackler Institute for Biological,
Physical and Engineering Sciences



crisp Center for Research on
Interface Structures
and Phenomena





70th New England Complex Fluids Workshop

Friday, March 24, 2017 • Yale University

Parking

Parking is provided free of charge to all participants at Science Hill parking garage, 200 Prospect Street (behind Ingalls Rink).

Guests must use PIN pad number **958#** (including the pound sign) to enter and exit the parking lot. Limited street parking (metered) is available on Hillhouse Avenue and other surrounding streets.

Directions to Yale Campus and Science Hill parking garage

From I-95:

- Take exit to **I-91** and follow directions below.

From I-91:

- Use **Exit #3** from I-91 and follow exit ramp.
- Proceed through traffic light at end of exit ramp onto **Trumbull Street**.
- At next traffic light, turn right onto **Whitney Avenue**.
- Travel north on Whitney Ave. to the **first** traffic light.
- Turn left onto Sachem Street.
- Turn right onto Prospect Street. Travel past Ingalls Rink on your left.
- The entrance to the **Science Hill parking garage** will be on your left.

Directions to Mason Laboratory

The workshop will be held in **Mason Laboratory** at 9 Hillhouse Avenue. It will take 10 minutes to walk from the parking garage.

- Walk south on Prospect Street. Turn left onto Sachem Street.
- Turn right onto Hillhouse Ave.
- Mason Laboratory will be on your left on Hillhouse after crossing Trumbull Street.

