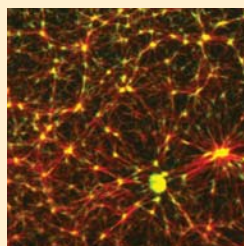
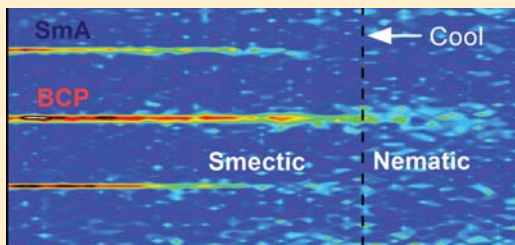


66th New England Complex Fluids Workshop

Friday, March 25, 2016

**Luce Hall
Yale University
New Haven, Connecticut
8:45 am – 5 pm**



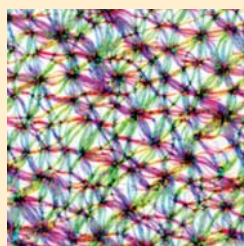
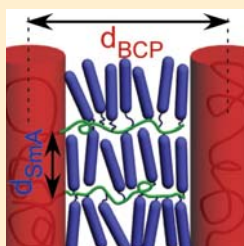
Invited speakers

- Victor Batista** (Yale)
- Fiorenzo Omenetto** (Tufts)
- Michael Murrell** (Yale)
- Katharina Ribbeck** (MIT)
- Alexandra Zidovska** (NYU)

Topics of invited talks

- Computational studies of photosynthesis
- Biologically derived materials
- Cytoskeletal mechanics
- Bio-inspired hydrogels
- Chromatin dynamics

Complex fluids

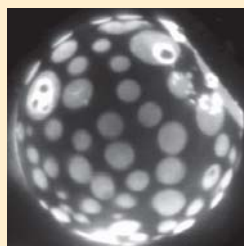
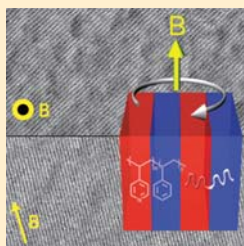


Objectives

These workshops are held to encourage collaboration and discussion among soft condensed matter researchers in the New England region and to facilitate career development for students and postdocs.

Sound bites

We welcome abstract submissions for the sound-bite sessions, which feature short talks (~4 min) highlighting current research.



Organizing committee

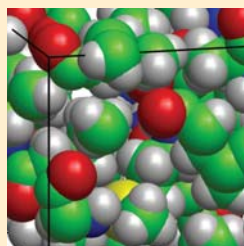
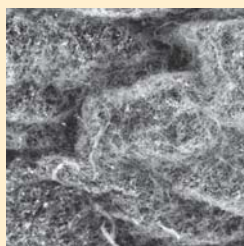
- | | |
|----------------------|-------------------------|
| Prof. Eric Dufresne | eric.dufresne@yale.edu |
| Prof. Corey O'Hern | corey.ohern@yale.edu |
| Prof. Chinedum Osuji | chinedum.osuji@yale.edu |

Website www.complexfluids.org

Registration deadline **March 23, 2016**

Sponsors

Center for Research on Interface Structures and Phenomena (NSF MRSEC)
 Dept. of Chemical & Environmental Engineering
 Dept. of Mechanical Engineering & Materials Science
 School of Engineering & Applied Science
 Raymond and Beverly Sackler Institute for Biological, Physical and Engineering Sciences



66th New England Complex Fluids Workshop

March 25, 2016 • Yale University

Parking

Parking is provided free of charge to all participants at Science Hill parking garage, 200 Prospect Street (behind Ingalls Rink).

Guests must use PIN pad number **635#** (including the pound sign) to enter and exit the parking lot. Only limited street parking is available and is not recommended.

Directions to Yale Campus and Science Hill Parking Garage

From I-95:

- Take exit to **I-91** and follow directions below.

From I-91:

- Use **Exit #3** from I-91 and follow exit ramp.
- Proceed through traffic light at end of exit ramp onto **Trumbull Street**.
- At next traffic light, turn right onto **Whitney Avenue**.
- Travel north on Whitney Ave. to the **first** traffic light.
- Turn left onto Sachem Street.
- Turn right onto Prospect Street. Travel past Ingalls Rink on your left.
- The entrance to the **Science Hill parking garage** will be on your left.

Directions to Luce Hall auditorium

The workshop will be held in **Luce Hall auditorium** (Room 101) at 34 Hillhouse Avenue. It will take 5 minutes to walk from the parking garage.

- Walk south on Prospect Street. Turn left onto Sachem Street.
- Turn right onto Hillhouse Ave.
- Luce Center will be on your right and recessed from Hillhouse Ave.

